

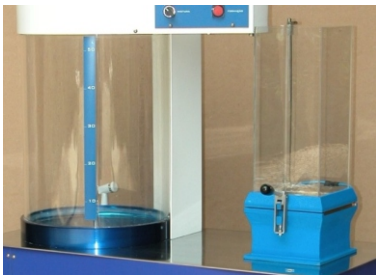
## SEMI-AUTOMATIC SHEET MOLD

### model FD-21

The FD-21 is an all new semi-automatic laboratory sheet former used for the production of standard laboratory handsheets for physical and optical testing with full respect to modern performance and ergonomic requirements.

The square sheet is formed from a pulp suspension on a standard wire screen gauze under suction generated by the flow of the water column.

The conventional sheet former is standard for Q.C. ( quality control ) and for R&D ( research and development ) of pulps, papers and chemical additives due to its typical sturdiness, precision, reliability and repeatability.



50L reservoir and square stock container



Dosing unit and control panel

#### MAJOR TECHNICAL CHARACTERISTICS

Produces square handsheets	265,7 cm <sup>2</sup> / (163x163) mm
----------------------------	--------------------------------------

*Plexiglass square stock container with adjustable sensor for water level filling and air bubbling for homogenization of pulp suspension.*

*Plexiglass dosing unit with sensor for adjusting dosing volume - 100 to 1000 ml*

*Plexiglass reservoir with 50L capacity with integrated recirculation and air bubbling for perfect homogenization of prepared pulp suspension*

*Built in PLC and simple integrated control panel with switches and push buttons ensure easy control of all the functions of the sheet former - filling of reservoir, draining of reservoir, recirculation in reservoir, air bubbling in reservoir, filling stock container, filling dosing unit and sheet forming*

*Stainless steel made #100/in (optional #150/in) standard wire screen gauze for sheet forming.*

*All parts in contact with water and pulp are made of corrosion resistant materials.*

**Standard accessories:**

- Couching weight

**Optional accessories:**

- Pneumatic drying press SP-21 for the removal of excessive water from wet sheet
- Standard blotter square 200 mm, 250 g/m<sup>2</sup>, pure pulp according to TAPPI T-205

Power supply	220 VAC, single phase, 60 Hz, 750 W
Air connection	6 bar instrument quality / 1,0 m <sup>3</sup> /h
Water connection	3 bar / 0,25 m <sup>3</sup> /h
Drain connection	Required
Dimensions	(1250 x 600 x 1800) mm (W x L x H)
Weight	185 kg

Note: due to constant development our equipment design and specifications are subject to change without notice.

**Address:** Av. Dr. Alberto Jackson Byington, 1595 · **CEP:** 06276-000 - Osasco - SP - Brazil

**Phone:** + 55 11 3601 5700 · **e-mail:** regmed@regmed.com.br

[www.regmed.com.br](http://www.regmed.com.br)